



HANSA HEAVY LIFT F-Series (SWL 300 mt)



Name	Call Sign	IMO	Built	Flag	Yard
HHL Elbe	D5EW4	9433262	2008	Liberia	Taizhou
HHL Tyne	D5EW5	9433274	2009	Liberia	Taizhou

Operator + Manager

HANSA HEAVY LIFT GmbH

Type

Multi Purpose Heavy Lift Vessel
Strengthened for heavy cargo and grab fitted

Class

DNV GL 100 A5 E3 (Ice Class)

Tonnage

DWT	12,776 mt on 8.00 m	(SSW)
GT	9,627 rt	
NT	4,261 rt	
Panama	8,123 rt	
Suez GRT	9,653.9 rt	

Dimensions

LOA	138.50 m	
Beam	21.00 m	
Depth Moulded	11.00 m	
Airdraft	39.50 m	(from keel)

Intake

Hold 1	abt. 2,701 cbm	or abt.	95,350 cbft
Hold 2	abt. 8,362 cbm	or abt.	295,301 cbft
Hold 3	abt. 4,890 cbm	or abt.	172,689 cbft
Total	15,952 cbm	or abt.	563,340 cbft

Nautical equipment

fitted for GMDSS A3, Iridium, Fleet Broadband, dual ECDIS, VSAT

Load distribution

Tank top	16.0 mt / sqm
Hatch covers	1.75 mt / sqm
Tween deck	4.0 mt / sqm

Main engine data

MAK 6M 43C	5,400 kW
Eco Speed	14.0 knts on abt. 25.0 mt
Max Speed	15.0 knts
MGO at sea	0.0 mt
MGO at port (idle)	abt. 1.7 mt / day
MGO at port (working)	abt. 3.0 mt / day

Maneuvering data

Bowthruster:	500 kW
Rudder:	Balanced flap type

Cargo handling gear

Crane type:	2 x 150 mt SWL El.-Hydr. Cranes NMF combinable up to 300 mt
Outreach:	16 m / 150 mt; 19 m / 120 mt 24 m / 95 mt; 33 m / 70 mt

Aux. Engine / Generator

Aux. Engine / Generator:	3 x diesel driven 520 kW
Emergency diesel:	1 x abt. 99 kW
Shaft generator:	1 x abt. 600 kW

Holds / Hatches

Holds: 3 double skinned, boxshaped/
narrow stepwise in container dimensions

Hatchcover:

Hold 1:	19.30 m (18.75 m opening) x 15.42 m (15.00 m opening)
Hold 2:	42.33 m (42.00 m opening) x 17.98 m (17.50 m opening)
Hold 3:	26.00 m (25.50 m opening) x 17.98 m (17.50 m opening)

Tweendeck:

Hold 1:	18.75 m x 15.01 m
Hold 2:	42.00 m x 17.50 m
Hold 3:	25.50 m x 17.50 m

Lower hold:

Hold 1:	18.75 m x 15.01 m
Hold 2:	42.00 m x 17.50 m
Hold 3:	25.50 m x 17.50 m

Heights:

Tanktop – Hatchcover

Hold 1:	10.53 m
Hold 2:	11.18 m
Hold 3:	10.77 m

Tanktop – Tweendeck (bottom edge)

Hold 1:	5.38 m
Hold 2:	3.33 m / 5.95 m / 7.40 m (adj.)
Hold 3:	5.54 m

Tweendeck (top edge) Hatchcover

Hold 1:	4.55 m
Hold 2:	2.98 m / 4.43 m / 7.05 m (adj.)
Hold 3:	4.43 m

Type of hatch covers:

TTS hydraulically operated
„trans-folding“ and „multi-folding“ hatch cover

Type of tweendeck:

Moveable, Pontoons; can be used
as vertical bulkheads in holds

Holds equipment:

All cargo holds are CO₂ fitted
Hold 1 has sprinkler system

Mechanical ventilation:

Hold 1:	6 fold
Hold 2+3:	12 air change per hour

Hatch Cover area:

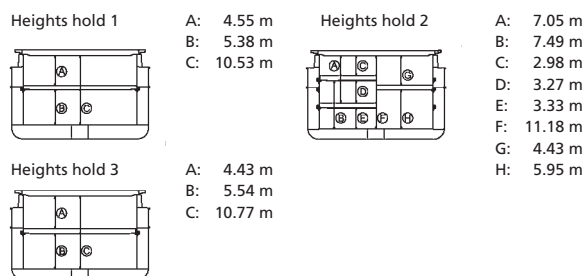
abt. 1,462 sqm

Tank capacities

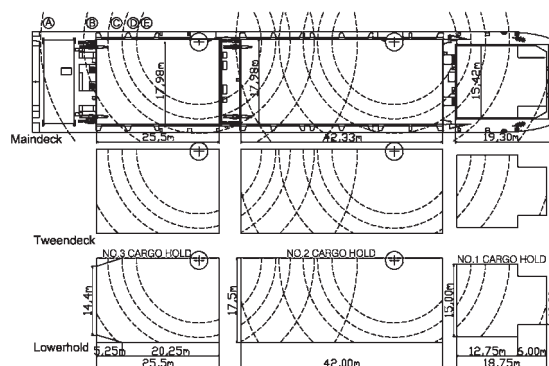
Ballast	4,931.6 cbm
Freshwater	149.1 cbm
HFO	abt. 979.9 cbm
MGO	abt. 159.1 cbm

Container capacity

Total	abt. 665 TEU
On deck	abt. 331 TEU
Under deck	abt. 334 TEU
Reefer plugs	abt. 50



Crane ranges: A: 3.5 m - 33 m / 70 mt | B: 4.0 m - 24 m / 95 mt
C: 4.5 m - 19 m / 120 mt | D: 4.5 m - 16 m / 150 mt



Disclaimer: The vessel specifications contained in this data sheet have been compiled to the best of HANSA HEAVY LIFT GmbH's knowledge. However, all specifications contained in this data sheet only describe "about" data and therefore cannot be considered as guaranteed specification of the respective vessel. Speed and consumption figures may vary from the data contained in this data sheet and are dependent on weather and sea conditions, the loaded cargo and the quality of the bunker on board. The loading and lifting capacities of the vessels are subject to the vessel's stability, trim, permissible weights, regulations of visibility and might depend on the cargo and/or ballast on board. None of the details set out in this data sheet shall be part of charter parties or other agreements between HANSA HEAVY LIFT GmbH, including its affiliates, and any third party.

For inquiries please contact us at: chartering@hansaheavylift.com