



## HANSA HEAVY LIFT F-Series (SWL 360 mt)



Name	Call Sign	IMO	Built	Flag	Yard
HHL Amur	D5CV2	9435753	2009	Liberia	Jiangzhou
HHL Mississippi	A8SX5	9435765	2009	Liberia	Jiangzhou

### Operator + Manager

HANSA HEAVY LIFT GmbH

### Type

Multi Purpose Heavy Lift Vessel  
Strengthened for heavy cargoes and grab fitted

### Class

DNV GL 100 A5 E3 (Ice Class)

### Tonnage

DWT	12,744 mt on 8.00 m	(SSW)
GT	9,611 rt	
NT	4,260 rt	
Panama – NT	8,133 rt	
Suez – NT	7,748.7 rt	

### Dimensions

LOA	138.07 m
Beam	21.00 m
Depth Moulded	11.00 m
Airdraft	39.40 m (from keel)

### Intake

Hold 1	abt. 2,701 cbm	or abt.	95,350 cbft
Hold 2	abt. 8,362 cbm	or abt.	295,301 cbft
Hold 3	abt. 4,890 cbm	or abt.	172,689 cbft
Total	15,952 cbm	or abt.	563,340 cbft

### Nautical equipment

fitted for GMDSS A3, Iridium, Fleet Broadband, dual ECDIS, VSAT

### Load distribution

Tank top	16.0 mt / sqm
Hatch covers	1.75 mt / sqm
Tween deck	4.0 mt / sqm

### Main engine data

MAK 6 M 43 C	5,400 kW
Eco Speed	14.0 knts on abt. 25.0 mt
Max Speed	15.0 knts
MGO at sea	0.0 mt
MGO at port (idle)	abt. 1.7 mt / day
MGO at port (working)	abt. 3.0 mt / day

### Maneuvering data

Bowthruster:	500 kW
Rudder:	Balanced flap type

### Cargo handling gear

Crane type:	2 x 180 mt SWL El.-Hydr. Cranes NMF combinable up to 360 mt
Outreach:	13 m / 180 mt; 16 m / 150 mt 19 m / 120 mt; 24 m / 95 mt 33 m / 70 mt

## Holds/Hatches

**Holds:** 3 double skinned, boxshaped / narrow stepwise in container dimensions

**Hatchcover:**

Hold 1: 19.30 m (18.75 m opening) x 15.42 m (15.00 m opening)  
 Hold 2: 42.33 m (42.00 m opening) x 17.98 m (17.50 m opening)  
 Hold 3: 26.00 m (25.50 m opening) x 17.98 m (17.50 m opening)

**Tweendeck:**

Hold 1: 18.75 m x 15.01 m  
 Hold 2: 42.00 m x 17.50 m  
 Hold 3: 25.50 m x 17.50 m

**Lower hold:**

Hold 1: 18.75 m x 15.01 m  
 Hold 2: 42.00 m x 17.50 m  
 Hold 3: 25.50 m x 17.50 m

**Heights:**

**Tanktop – Hatchcover**

Hold 1: 10.53 m  
 Hold 2: 11.18 m  
 Hold 3: 10.77 m

**Tanktop – Tweendeck (bottom edge)**

Hold 1: 5.43 m  
 Hold 2: 3.25 m / 6.00 m / 7.45 m (adj.)  
 Hold 3: 5.59 m

**Tweendeck (top edge) Hatchcover**

Hold 1: 4.50 m  
 Hold 2: 2.93 m / 4.38 m / 7.13 m (adj.)  
 Hold 3: 4.38 m

**Type of hatch covers:** Hydr. folding type

**Type of tweendeck:** Moveable, Pontoons; can be used as vertical bulkheads in holds

**Holds equipment:** All cargo holds are CO<sub>2</sub> fitted  
 Hold 1 has sprinkler system

**Mechanical ventilation:**

Hold 1: 6 fold  
 Hold 2+3: 12 air change per hour

**Hatch Cover area:** abt. 1,462 Sqm

## Aux. Engine/ Generator

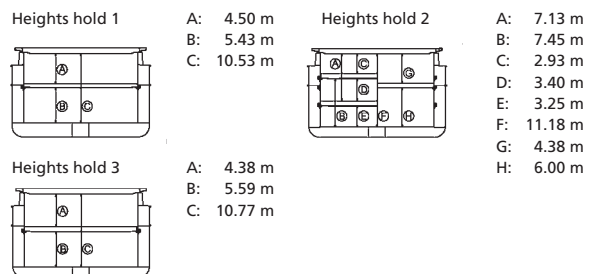
**Aux. Engine/Generator:** 3 x diesel driven 395 kW  
**Emergency diesel:** 1 x abt. 99 kW  
**Shaft generator:** 1 x abt. 750 kW

## Tank capacities

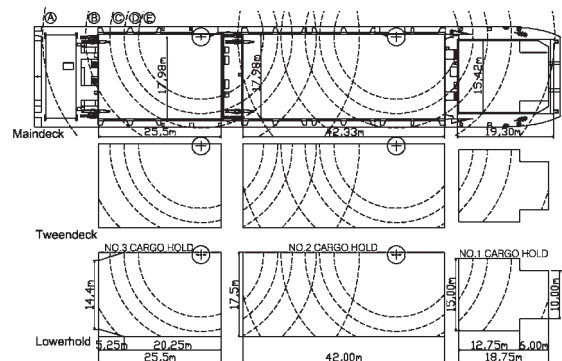
**Ballast:** 5,000 cbm  
**Freshwater:** 128 cbm  
**HFO:** abt. 948 cbm  
**MGO:** abt. 150 cbm

## Container capacity

**Total:** abt. 665 TEU  
**On deck:** abt. 331 TEU  
**Under deck:** abt. 334 TEU  
**Reefer plugs:** abt. 25



**Crane ranges:** A: 3.5 m - 33 m / 70 mt | B: 4.0 m - 24 m / 95 mt  
 C: 4.5 m - 19 m / 120 mt | D: 4.5 m - 16 m / 150 mt  
 E: 5.0 m - 13 m / 180 mt



Disclaimer: The vessel specifications contained in this data sheet have been compiled to the best of HANSA HEAVY LIFT GmbH's knowledge. However, all specifications contained in this data sheet only describe "about" data and therefore cannot be considered as guaranteed specification of the respective vessel. Speed and consumption figures may vary from the data contained in this data sheet and are dependent on weather and sea conditions, the loaded cargo and the quality of the bunker on board. The loading and lifting capacities of the vessels are subject to the vessel's stability, trim, permissible weights, regulations of visibility and might depend on the cargo and/or ballast on board. None of the details set out in this data sheet shall be part of charter parties or other agreements between HANSA HEAVY LIFT GmbH, including its affiliates, and any third party.

For inquiries please contact us at: [chartering@hansaheavylift.com](mailto:chartering@hansaheavylift.com)