



## HANSA HEAVY LIFT P2-Series (SWL 1400 mt)



Name	Call Sign	IMO	Built	Flag	Yard
HHL Valparaiso	D5AU3	9424558	2010	Liberia	Hudong
HHL Tokyo	V2FH9	9448346	2011	Liberia	Hudong
HHL Lagos	V2FK4	9448358	2011	Liberia	Hudong
HHL Richards Bay	D5CU8	9448308	2010	Liberia	Hudong
HHL Fremantle	CQI18	9448360	2011	Madeira	Hudong

### Operator + Manager

HANSA HEAVY LIFT GmbH

### Type

Multi Purpose Heavy Lift Vessel  
Strengthened for heavy cargoes and grab fitted

### Class

DNV GL 100 A5 E3 (Ice Class)

### Tonnage

DWT	19,450 mt on 9.50 m	(SSW)
GT	17,634 rt	
NT	6,617 rt	
Panama	14,862 rt	
Suez GRT	15,811 rt	

### Dimensions

LOA	168.68 m	
Beam	25.20 m	
Depth Moulded	13.85 m	
Airdraft	45.15 m	(from keel)

### Intake

Hold 1	abt. 4,275 cbm	or abt.	150,993 cbft
Hold 2	abt. 22,062 cbm	or abt.	779,230 cbft
Total	abt. 26,337 cbm	or abt.	930,223 cbft

### Nautical equipment

fitted with GMDSS A3, Iridium, Fleet Broadband,  
dual ECDIS, VSAT

### Load distribution

Tank top	18.0 mt / sqm
Hatch covers	5.0 mt / sqm
Tween deck	3.5 mt / sqm

### Main engine data

MAN 7L 58 / 64	9,800 kW
Eco Speed	14 knts on abt. 29.5 mt
Max Speed	17.5 knts
MGO at sea	0.0 mt
MGO in port (idle)	abt. 1.7 mt / day
MGO in port (working) abt.	4.0 mt / day

### Maneuvering data

Bowthruster:	1 x 800 kW
Rudder:	Balanced flap type

### Tank capacities

Ballast	12,000 cbm
Freshwater	200 cbm
HFO	abt. 1,500 cbm
MGO	abt. 200 cbm

### Container capacity

Total	abt. 912 TEU
On deck	abt. 488 TEU
Under deck	abt. 424 TEU
Reefer plugs	abt. 100

## Holds / Hatches

**Holds:** 2 double skinned, boxshaped/  
narrow stepwise in container dimensions

**Hatchcover:**

Hatch 1: 23.28 m (22.94 m opening)  
x 14.26 m (13.76 m opening)  
Hatch 2: 83.57 m (82.40 m opening)  
x 19.46 m (18.66 m opening)

**Tweendeck:**

Hold 1: 22.94 m x 13.76 m  
Hold 2: 82.40 m x 18.66 m

**Lower hold:**

Hold 1: 22.94 m x 13.76 m / 9.56 m  
Hold 2: 82.40 m x 18.66 m

Subdivision of Hold 2 with 2 grain bulkheads  
in 7 possible positions

**Heights:**

Tanktop – Hatchcover:

Hold 1: 14.25 m  
Hold 2: 14.83 m

Tweendeck heights adjustable

Hold 1: 2 different heights of tweendeck  
Hold 2: 4 different heights of tweendeck

**Type of hatch covers:**

Hydr. folding type, combinable w / pontoons

**Holds equipment:**

Both holds CO<sub>2</sub> fitted

**Ventilation:**

6 air change per hour

## Aux. Engine / Generator

Aux. Engine / Generator: 3 x 994 kW  
Emergency diesel: 1 x 200 kW  
Shaft generator: 1 x 1550 kW

## Cargo handling gear

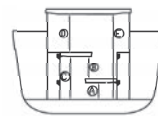
**Crane type:**

Cranes 2 & 3: 2 x 700 mt SWL El.-Hydr.Cranes NMF  
combinable up to 1400 mt SWL  
Crane 1: 1 x 180 mt SWL El.-Hydr. Cranes NMF

**Outreach:**

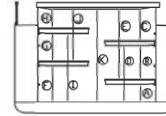
Cranes 2 & 3: 14 m / 700 mt; 21 m / 500 mt  
26 m / 400 mt; 30 m / 350 mt; 33 m / 40 mt (aux. hoist)  
Crane 1: 13 m / 180 mt; 16 m / 150 mt; 19 m / 120 mt  
24 m / 95 mt; 33 m / 70 mt; 33 m / 38 mt

**Heights hold 1**



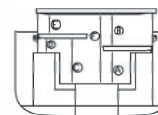
A: 2.69 m  
B: 3.91 m  
C: 7.22 m  
D: 6.38 m  
E: 14.25 m

**Heights hold 2**



A: 2.78 m  
B: 5.31 m  
C: 5.14 m  
D: 8.92 m  
E: 11.25 m  
F: 5.79 m  
G: 4.40 m  
H: 3.04 m  
I: 11.01 m  
J: 8.24 m  
K: 14.85 m

**Heights hold 2 Aft.**

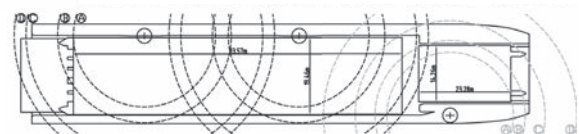


A: 5.31 m  
B: 5.18 m  
C: 7.41 m  
D: 2.41 m  
E: 3.08 m  
F: 11.29 m

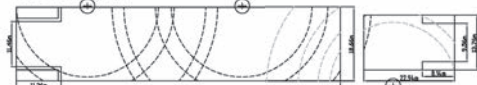
**Crane ranges:**

A: 6.5 m - 14 m / 700 mt | B: 6.0 m - 21 m / 500 mt  
C: 6.0 m - 26 m / 400 mt | D: 6.0 m - 30 m / 350 mt  
E: 6.5 m - 33 m / 40 mt (aux.)

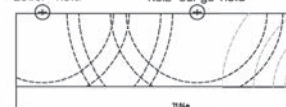
Main Deck



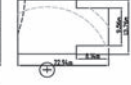
Lower Hold on 3.6m height



Lower Hold No.2 Cargo Hold



No.1 Cargo Hold



Disclaimer: The vessel specifications contained in this data sheet have been compiled to the best of HANSA HEAVY LIFT GmbH's knowledge. However, all specifications contained in this data sheet only describe "about" data and therefore cannot be considered as guaranteed specification of the respective vessel. Speed and consumption figures may vary from the data contained in this data sheet and are dependent on weather and sea conditions, the loaded cargo and the quality of the bunker on board. The loading and lifting capacities of the vessels are subject to the vessel's stability, trim, permissible weights, regulations of visibility and might depend on the cargo and/or ballast on board. None of the details set out in this data sheet shall be part of charter parties or other agreements between HANSA HEAVY LIFT GmbH, including its affiliates, and any third party.

For inquiries please contact us at: [chartering@hansaheavylift.com](mailto:chartering@hansaheavylift.com)