



HANSA HEAVY LIFT P2-Series (SWL 800 mt)



Name	Call Sign	IMO	Built	Flag	Yard
HHL Rio de Janeiro	CQIG5	9424546	2009	Madeira	Hudong
HHL Kobe	V2FU2	9448384	2012	Liberia	Hudong
HHL New York	V2FT9	9448372	2011	Liberia	Hudong

Operator + Manager

HANSA HEAVY LIFT GmbH

Type

Multi Purpose Heavy Lift Vessel
Strengthened for heavy cargoes and grab fitted

Class

DNV GL 100 A5 E3 (Ice Class)

Tonnage

DWT	20,100 mt on 9.50 m	(SSW)
GT	17,634 rt	
NT	6,617 rt	
Panama	14,862 rt	
Suez GRT	15,811 rt	

Dimensions

LOA	168.68 m
Beam	25.20 m
Depth Moulded	13.85 m
Airdraft	45.15 m (from keel)

Intake

Hold 1	abt. 4,275 cbm	or abt. 150,993 cbft
Hold 2	abt. 22,062 cbm	or abt. 779,230 cbft
Total	abt. 26,337 cbm	or abt. 930,223 cbft

Nautical equipment

fitted with GMDSS A3, Iridium, Fleet Broadband,
dual ECDIS, VSAT

Load distribution

Tank top	18.0 mt / sqm
Hatch covers	5.0 mt / sqm
Tween deck	3.5 mt / sqm

Main engine data

MAN 7L 58 / 64	9,800 kW
Eco Speed	14 knts on abt. 29.5 mt
Max Speed	17.5 knts
MGO at sea	0.0 mt
MGO in port (idle)	abt. 1.7 mt / day
MGO in port (working) abt.	4.0 mt / day

Maneuvering data

Bowthruster:	1 x 800 kW
Rudder:	Balanced flap type

Tank capacities

Ballast	12,000 cbm
Freshwater	200 cbm
HFO	abt. 1,500 cbm
MGO	abt. 200 cbm

Container capacity

Total	abt. 912 TEU
On deck	abt. 488 TEU
Under ddeck	abt. 424 TEU
Reefer plugs	abt. 100

Holds / Hatches

Holds: 2 double skinned, boxshaped / narrow stepwise in container dimensions

Hatchcover:

Hatch 1: 23.28 m (22.94 m opening)
x 14.26 m (13.76 m opening)

Hatch 2: 83.57 m (82.40 m opening)
x 19.46 m (18.66 m opening)

Tweendeck:

Hold 1: 22.94 m x 13.76 m

Hold 2: 82.40 m x 18.66 m

Lower hold:

Hold 1: 22.94 m x 13,76 m / 9.56 m

Hold 2: 82.40 m x 18.66 m

Subdivision of Hold 2 with 2 grain bulkheads in 7 possible positions

Heights:

Tanktop - Hatchcover:

Hold 1: 14.25 m

Hold 2: 14.83 m

Tweendeck heights adjustable

Hold 1: 2 different heights of tweendeck

Hold 2: 4 different heights of tweendeck

Type of hatch covers:

Hydr. folding type, combinable w / pontoons

Holds equipment:

Both holds CO₂ fitted

Ventilation:

6 fold air change per hour

Aux. Engine / Generator

Aux. Engine / Generator: 3 x 994 kW

Emergency diesel: 1 x 200 kW

Shaft generator: 1 x 1550 kW

Cargo handling gear

Crane type:

Cranes 2&3: 2 x 400 mt SWL handling gear El.-Hydr.
Cranes NMF, combinable up to 800 mt SWL

Crane 1:

1 x 120 mt (HHL Rio de Janeiro)
1 x 180 mt (HHL New York, HHL Kobe)
SWL El.-Hydr. Cranes NMF

Outreach:

Cranes 2&3: 18 m / 400 mt; 22 m / 325 mt
30 m / 240 mt; 33 m / 40 mt (aux. hoist)

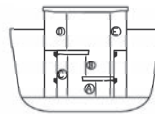
Crane 1:

120 mt: 16 m / 120 mt; 19 m / 95 mt
24 m / 75 mt; 32 m / 55 mt

180 mt: 13 m / 180 mt; 16 m / 150 mt; 19 m / 120 mt
24 m / 95 mt; 33 m / 70 mt; 33 m / 38 mt

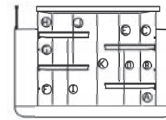
Heights hold 1

A: 2.69 m
B: 3.91 m
C: 7.22 m
D: 6.38 m
E: 14.25 m



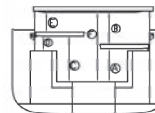
Heights hold 2

A: 2.78 m
B: 5.31 m
C: 5.14 m
D: 8.92 m
E: 11.25 m
F: 5.79 m
G: 4.40 m
H: 3.04 m
I: 11.01 m
J: 8.24 m
K: 14.85 m



Heights hold 2 Aft.

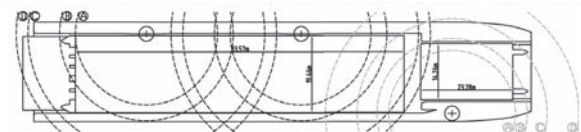
A: 5.31 m
B: 5.18 m
C: 7.41 m
D: 2.41 m
E: 3.08 m
F: 11.29 m



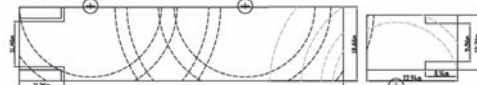
Crane ranges:

A: 6.0 m - 18 m / 400 mt | B: 6.0 m - 22 m / 325 mt
C: 4.5 m - 30 m / 200 mt (240 mt / automatic mode)
D: 6.5 m - 33 m / 40 mt (aux.)

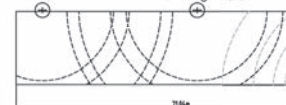
Main Deck



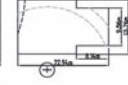
Lower Hold on 3.6m height



Lower Hold No.2 Cargo Hold



No.1 Cargo Hold



Disclaimer: The vessel specifications contained in this data sheet have been compiled to the best of HANSA HEAVY LIFT GmbH's knowledge. However, all specifications contained in this data sheet only describe "about" data and therefore cannot be considered as guaranteed specification of the respective vessel. Speed and consumption figures may vary from the data contained in this data sheet and are dependent on weather and sea conditions, the loaded cargo and the quality of the bunker on board. The loading and lifting capacities of the vessels are subject to the vessel's stability, trim, permissible weights, regulations of visibility and might depend on the cargo and/or ballast on board. None of the details set out in this data sheet shall be part of charter parties or other agreements between HANSA HEAVY LIFT GmbH, including its affiliates, and any third party.

For inquiries please contact us at: chartering@hansaheavylift.com