



## HANSA HEAVY LIFT P1-Series (SWL 800 mt)



Name	Call Sign	IMO	Built	Flag	Yard
HHL Venice	V2ET4	9418987	2010	Antigua & Barbuda	Qingshan
HHL Lisbon	D5BN2	9418975	2009	Liberia	Qingshan

### Operator + Manager

HANSA HEAVY LIFT GmbH

### Type

Multi Purpose Heavy Lift Vessel  
Strengthened for heavy cargoes and grab fitted

### Class

DNV GL 100 A5 E3 (Ice Class)

### Tonnage

DWT	19,350 mt on 9.80 m	(SSW)
GT	15,377 rt	
NT	5,722 rt	
Panama	12,884 rt	
Suez GRT	13,707 rt	

### Dimensions

LOA	166.25 m	
Beam	22.90 m	
Depth Moulded	13.90 m	
Airdraft	45.62 m	(from keel)

### Intake

Hold 1	abt. 3,889 cbm	or abt.	137,336 cbft
Hold 2	abt. 20,070 cbm	or abt.	708,752 cbft
Total	abt. 23,959 cbm	or abt.	846,088 cbft

### Nautical equipment

fitted with GMDSS A3, Iridium, Fleet Broadband,  
dual ECDIS, VSAT

### Load distribution

Tank top	18.0 mt / sqm
Hatch covers	5.0 mt / sqm
Tween deck	3.5 mt / sqm

### Main engine data

MAN 7L 58 / 64	9,800 kW
Eco Speed	14 knts on abt. 29.5 mt
Max Speed	17.5 knts
MGO at sea	0.0 mt
MGO in port (idle)	abt. 1.7 mt / day
MGO in port (working) abt.	4.0 mt / day

### Maneuvering data

Bowthruster:	1 x 800 kW
Rudder:	Balanced flap type

### Cargo handling gear

<b>Crane Type:</b>	
Cranes 2&3:	2 x 400 mt SWL El.-Hydr.Cranes NMF combinable up to 800 mt SWL
Crane 1:	1 x 120 mt SWL El.-Hydr. Cranes NMF
<b>Outreach:</b>	
Cranes 2 & 3:	18 m / 400 mt; 22 m / 325 mt 30 m / 240 mt; 33 m / 40 mt (aux. hoist)
Crane 1:	16 m / 120 mt; 19 m / 95 mt 24 m / 75 mt; 32 m / 55 mt

## Holds/Hatches

**Holds:** 2 double skinned, boxshaped / narrow stepwise in container dimensions

### Hatchcover:

Hatch 1: abt. 25.60 m (25.20 m opening)  
x abt. 13.50 m (13.10 m opening)  
Hatch 2: abt. 86.50 m (86.10 m opening)  
x abt. 18.40 m (18.00 m opening)

### Tweendeck:

Hold 1: 25.20 m x 13.10 m  
Hold 2: 86.10 m x 18.00 m / 13.10 m

### Lower hold:

Hold 1: 25.20 m x 13.10 m / 8.00 m  
Hold 2: 86.10 m x 18.00 m / 13.10 m

### Heights:

#### Tanktop - Hatchcover

Hold 1: 13.27 m (aft); 11.47 m (fore)  
Hold 2: 13.67 m (fore); 11.47 m (aft)  
Tweendeck heights adjustable on  
2 different heights (Hold 1)  
4 different heights (Hold 2)

#### Tanktop - Tweendeck (bottom edge):

Hold 1: 3.52 m / 6.57 m (fore)  
5.32 m / 8.37 m (aft)  
Hold 2: 3.27 m / 5.72 m / 8.77 m / 10.55 m (fore)  
3.52 m / 6.57 m / 8.35 m (aft)

#### Tweendeck (top edge) - Hatchcover:

Hold 1: 7.35 m / 4.32 m  
Hold 2: 9.50 m / 7.07 m / 4.00 m / 2.27 m (adj.)

**Type of hatch covers:** Hydr. folding type combinable w / pontoons

**Holds equipment:** Both holds CO<sub>2</sub> fitted

**Ventilation:** 6 air change per hour

## Aux. Engine / Generator

Aux. Engine / Generator: 3 x 590 kW  
Emergency diesel: 1 x 450 kW  
Shaft generator: 1 x 1,550 kW

## Tank capacities

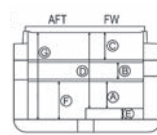
Ballast 9,600 cbm  
Freshwater 192 cbm  
HFO abt. 1,570 cbm  
MGO abt. 235 cbm

## Container capacity

Total abt. 1031 TEU  
On deck abt. 544 TEU  
Under deck abt. 478 TEU  
Reefer plugs abt. 100

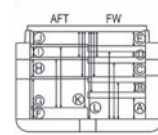
### Heights hold 1

A: 3.52 m  
B: 2.45 m  
C: 4.34 m  
D: 11.52 m  
E: 1.80 m  
F: 5.32 m  
G: 13.32 m



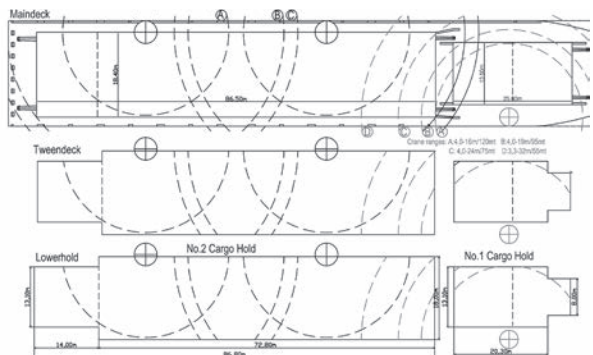
### Heights hold 2

A: 3.27 m  
B: 5.50 m  
C: 2.15 m  
D: 8.75 m  
E: 2.07 m  
F: 2.20 m  
G: 3.82 m  
H: 2.45 m  
I: 1.62 m



### Crane ranges:

A: 6.0 m - 18 m / 400 mt | B: 6.0 m - 22 m / 325 mt  
C: 4.5 m - 30 m / 200 mt (240 mt / automatic mode)  
D: 6.5 m - 33 m / 40 mt (aux.)



Disclaimer: The vessel specifications contained in this data sheet have been compiled to the best of HANSA HEAVY LIFT GmbH's knowledge. However, all specifications contained in this data sheet only describe "about" data and therefore cannot be considered as guaranteed specification of the respective vessel. Speed and consumption figures may vary from the data contained in this data sheet and are dependent on weather and sea conditions, the loaded cargo and the quality of the bunker on board. The loading and lifting capacities of the vessels are subject to the vessel's stability, trim, permissible weights, regulations of visibility and might depend on the cargo and/or ballast on board. None of the details set out in this data sheet shall be part of charter parties or other agreements between HANSA HEAVY LIFT GmbH, including its affiliates, and any third party.

For inquiries please contact us at: [chartering@hansaheavylift.com](mailto:chartering@hansaheavylift.com)